

# FOODtech Week

AI



IoT

## Tokyo Show

### 5th **FOODtech Week** Tokyo

Dates: **Nov. 20** [Wed] – **22** [Fri], 2024

Venue: **Makuhari Messe, Japan**

Concurrent shows: **9th Drink JAPAN**  
**1st Restaurant Industry  
Innovation Week Tokyo**

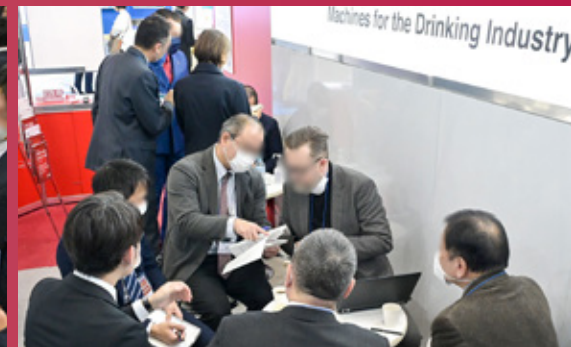
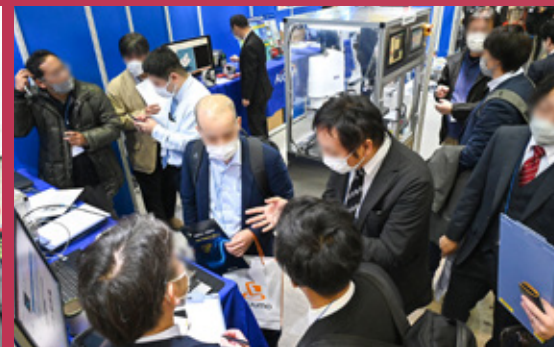
## Osaka Show

### 4th **FOODtech Week** Osaka

Dates: **Feb. 25** [Tue] – **27** [Thu], 2025

Venue: **INTEX Osaka, Japan**

Concurrent shows: **11th INTERPHEX Week Osaka**  
**11th Regenerative Medicine Expo OSAKA**



# INDEX

 Click below and jump to the page.

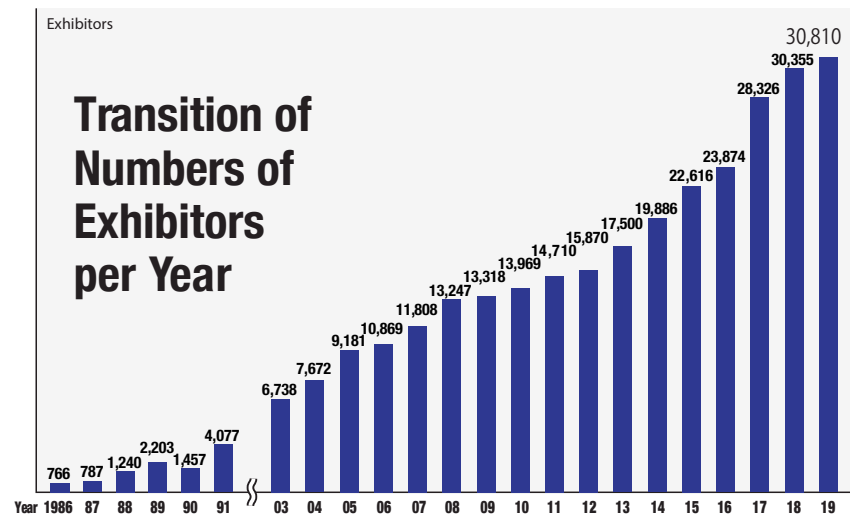
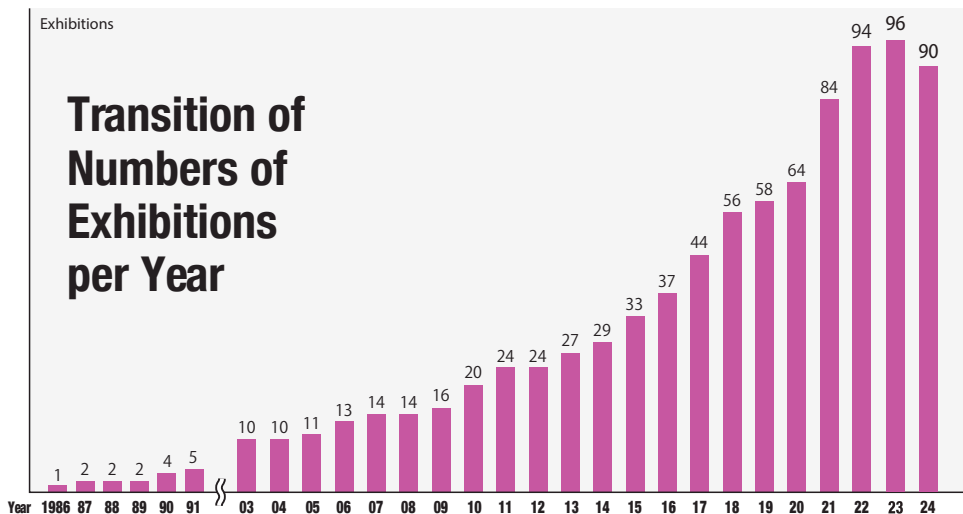
 <b>RX Japan</b> .....	P2
 <b>What's FOODtech Week</b> .....	P3
 <b>Scenes from the Previous Show</b> .....	P4
 <b>Features</b> .....	P5
 <b>Visitor</b> .....	P6
 <b>Exhibitor's REAL VOICE</b> .....	P7
 <b>Conference</b> .....	P8
 <b>Promotion Service</b> .....	P9
 <b>Schedule to Exhibit</b> .....	P10
 <b>Additional Promotion Opportunities</b> .....	P11
 <b>Contact</b> .....	P12

# RX Japan is Japan's Largest Trade Show Organiser

**Holding 90 exhibitions in 39 sectors a year!**

( The consisting shows are 372 in total )

RX Japan organises 90 exhibitions a year at large exhibition halls such as Tokyo Big Sight, Makuhari Messe and INTEX Osaka across a wide variety of 39 fields including jewellery, fashion, gift items, electronics, energy, IT, cosmetics and medical. RX Japan fully contributes to expand the exhibitors' business by making the most of the expertise backed up with the experiences.



## Exhibitors organised by RX Japan (exerpts)

### CONTENT TOKYO



**Japan's Largest\* Trade Show for Content Creation, Production, and Licensing**

Consisting Shows:

- Production/Studio Expo
- Advanced Digital Technology Expo
- Ad Creative & Marketing Expo

etc.

### MANUFACTURING WORLD



**Asia's Leading Trade Show for Manufacturing**

Consisting Shows:

- Design Engineering & Manufacturing Solutions Expo
- Industrial AI/IoT Expo
- Additive Manufacturing Expo

etc.

### JAPAN BUILD –Int'l Building & Home Week–



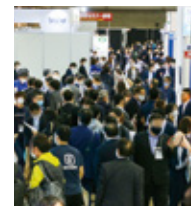
**Asia's Leading Show Covering Building and Housing Industries**

Consisting Shows:

- Smart Home Expo
- Smart Building Expo
- Building Renovation Expo
- Building Material & Housing Equipment Expo

etc.

### MEDICAL JAPAN



**Leading Trade Show for Medical, Elderly Care and Pharmacy Industry**

Consisting Shows:

- Hospital Expo
- Clinics Expo
- Pharmacy Solutions Expo
- Elderly Care & Welfare Expo

etc.

\* "Largest" in reference to the exhibitor number of trade shows with the same concept.

# Japan's Leading Exhibition for **Food Technologies**

**FOODtech Week consists of:**

**- FOODtech Japan - Food Factory Tech Show & Food Hygiene Expo - Food Safety Show.**

5th **FOODtech Week** Tokyo

**Food Factory Technology**



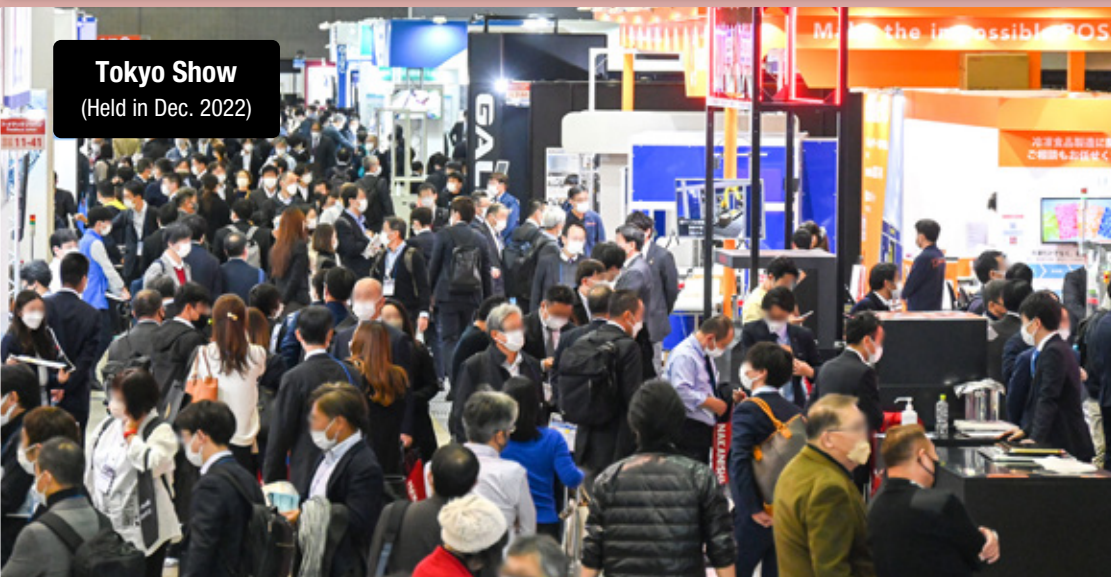
**NEW** 1st **Food Hygiene Expo** Tokyo

**Food Safety Technology**

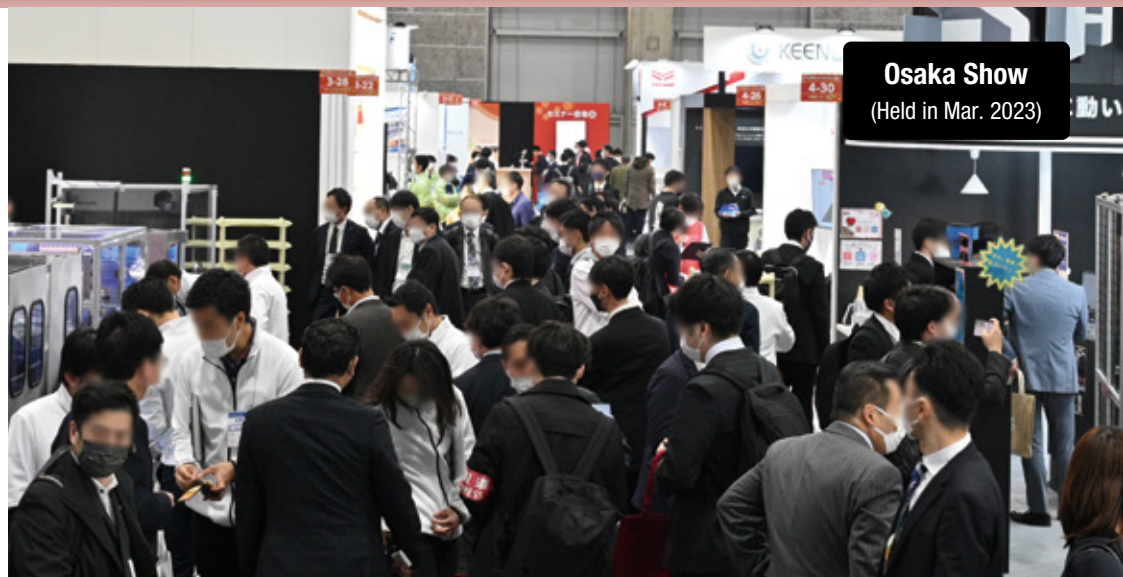




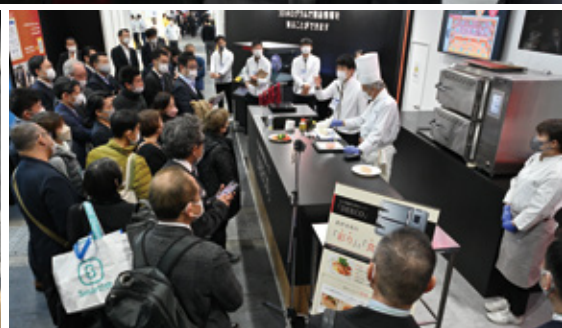
# Specialised Show for Food Factory & Food Safety Technologies



**Tokyo Show**  
(Held in Dec. 2022)



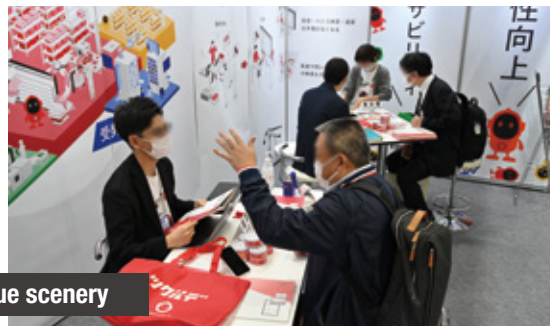
**Osaka Show**  
(Held in Mar. 2023)



**Scenes from Tokyo Show (Video)**



Show venue scenery



**Scenes from Osaka Show (Video)**



# Ideal Business Platform for **Food Industry Professionals**

## ■ Exhibition Outline

### FOODtech JAPAN

#### Exhibit products

- IoT & AI
- Robots
- AGV conveyance equipment
- FA equipment
- Manufacturing/inspection equipment
- Processing/packaging equipment
- Labor-saving equipment and material handling equipment
- EC site

...etc.

### Food Hygiene Expo

#### Exhibit products

- AI visual inspection systems
- Analytical/surveillance cameras
- HACCP measures plans
- Sanitary materials
- Cleanwear
- Cleaning/sterilization technologies
- Insect/rodent control measures plans
- Consultant

...etc.



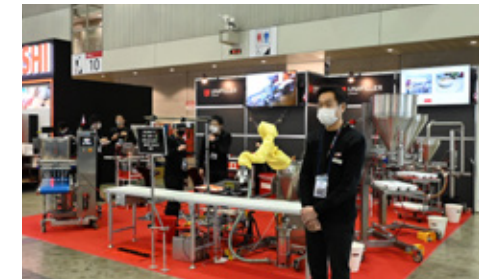
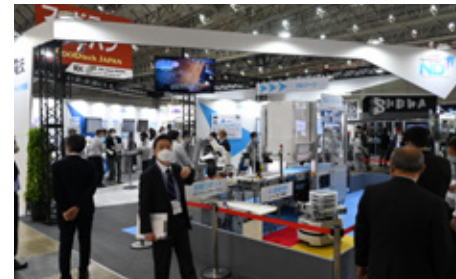
## Business Matching Meetings



#### Visitors

- Food manufacturers
- Beverage manufacturers
- Confectionery manufacturers
- Bakery product manufacturers
- Health food manufacturers
- Chain restaurants
- Distributors/Importers

...etc.



# 19,000 Visitors\* at Osaka Show/ 28,000 Visitors\* at Tokyo Show!

\*expected, including concurrent shows

## ■ Major food manufacturers visit from all over Japan!

### Excerpt List of Expected Visitors in 2022

(in alphabetical order)

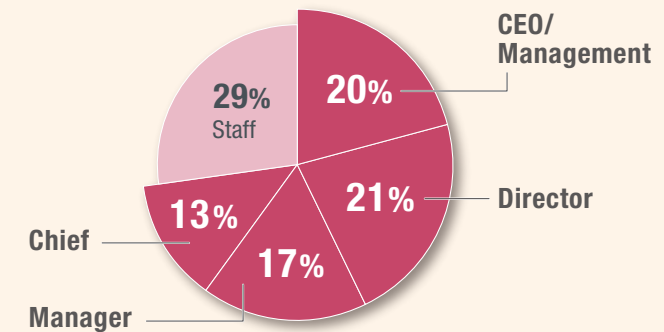
- ACECOOK CO., LTD.
- AJINOMOTO CO.,INC.
- AKAGI NYUGYO CO., LTD.
- AKINDO SUSHIRO CO., LTD.
- ANRAKUTEI CO., LTD.
- AOHATA CORPORATION
- ASAHI BREWERIES, LTD.
- ASAHI SOFT DRINKS CO., LTD.
- ATOM CORPORATION
- BMS CO., LTD.
- BOURBON CORPORATION
- BRONCO BILLY CO., LTD.
- CALBEE, INC.
- CLUB HARIE CO., LTD.
- COCA-COLA BOTTLERS JAPAN INC.
- COLLECTUS, INC.
- COLOWIDE CO., LTD.
- CREATE RESTAURANTS HOLDINGS INC.
- DAISYO CORPORATION
- DOTOR NICHIREI HOLDINGS CO., LTD.
- DREAM ADVANCE CO., LTD.
- DUSKIN CO., LTD.
- DYDO DRINCO.
- EBARA FOODS INDUSTRY, INC.
- ECHIGO SEIKA CO., LTD.
- EZAKI GLICO CO., LTD.
- FUJII BAKING GROUP.
- FUJICCO CO., LTD.
- FUKUSAYA CO., LTD.
- FUKUYA CO., LTD.
- FUTABA FOODS INC.
- GANKO FOOD SERVICE CO., LTD.
- GEKKEIKAN SAKE CO., LTD.
- HAGOROMO FOODS CORPORATION
- HIDAY HIDAKA CORP.
- HIGASHIMARU SHOYU CO., LTD.
- HILLTOP FOOD SYSTEM CO., LTD.
- HOKUTO CORPORATION
- HOUSE FOODS CORP.
- ICHIBANYA CO., LTD.
- ICHIRAN INC.
- INA FOOD INDUSTRY CO., LTD.
- ITOHAM FOODS INC.
- JAPAN SYSTEM CORPORATION
- JOYFULL CO., LTD.
- KABAYA FOODS CORPORATION
- KAGOME CO., LTD.
- KAMEDA SEIKA CO., LTD.
- KAPPA CREATE CO., LTD.
- KATO PLEASURE GROUP
- KENKO MAYONNAISE CO., LTD.
- KEWPIE CORPORATION
- KFC HOLDINGS JAPAN, LTD.
- KIKKOMAN CORPORATION
- KIKU-MASAMUNE SAKE BREWING CO., LTD.
- KIRIN HOLDINGS COMPANY, LIMITED
- KIRISHIMA SHUZO CO., LTD.
- KISOJI CO., LTD.
- KOBBEYA BAKING CO., LTD.
- KOURAKUEN CO., LTD.
- KR HOLDINGS
- KURA SUSHI, INC.
- LOTTE CO., LTD.
- LOTTERIA CO., LTD.
- MANNANLIFE CO., LTD.
- MARUDAI FOOD CO., LTD.
- MARUKOME CO., LTD.
- MATSUJYA FOODS HOLDINGS CO., LTD.
- MCDONALD'S COMPANY (JAPAN), LTD.
- MEGMILK SNOW BRAND CO., LTD.
- MEIGETSUDO CO., LTD.
- MEIJI CO., LTD.
- MIZKAN HOLDINGS CO., LTD.
- MONTEROZA CO., LTD.
- MORINAGA MILK INDUSTRY CO., LTD.
- MOROZOFF.LIMITED
- MOS FOOD SERVICES, INC.
- NATIONAL FOODS CO., LTD.
- NESTLÉ JAPAN LTD.
- NH FOODS LTD.
- NICHIREI FOODS INC.
- NIHON SHOKKEN HOLDINGS CO., LTD.
- NIPPON RESTAURANT SYSTEM, INC.
- NISSHIN SEIFUN GROUP INC.
- NISSIN FOODS HOLDINGS CO., LTD.
- NOSAN CORPORATION
- OGAWA COFFEE CO., LTD.
- OHSHO FOOD SERVICE CORPORATION
- OTSUKA PHARMACEUTICAL FACTORY, INC.
- PASCO SHIKISHIMA CORPORATION
- PIZZA HUT JAPAN LTD.
- PLENUS CO., LTD.
- POKKA SAPPORO FOOD & BEVERAGE LTD.
- REINS INTERNATIONAL INC.
- ROKKO BUTTER CO.,LTD
- ROYAL HOLDINGS CO., LTD.
- ROYAL SHOJI CO., LTD.
- SAGAMIYA FOODS CO,LTD.
- SAINTMARC HOLDINGS CO., LTD.
- SAIZERIYA CO., LTD.
- SAPPORO BREWERIES LTD.
- SATO FOODSERVICE CO., LTD.
- SEVEN & I FOOD SYSTEMS CO., LTD.
- SHODA SHOYU CO., LTD.
- SHOWA SANGYO CO., LTD.
- SKYLARK GROUP
- STARBUCKS COFFEE COMPANY
- SUBWAY JAPAN G.K.
- SUNTORY HOLDINGS LIMITED
- TAKANASHI MILK CO., LTD.
- TENICHI SHOKUJIN SHOJI, K.K.
- THE MONOGATARI CORPORATION
- TORIDOLL HOLDINGS CORPORATION
- TOYO SUISAN KAISHA, LTD.
- TULLY'S COFFEE JAPAN CO., LTD.
- UCC UESHIMA COFFEE CO., LTD.
- WAKO GROUP
- WATAMI CO., LTD.
- WDI CORPORATION
- YAKULT HONSHA CO., LTD.
- YAMADA SHOKUJIN SANGYO CO., LTD.
- YAMAKI CO., LTD.
- YAMASA CORPORATION
- YAMAYA COMMUNICATIONS, INC.
- YAMAZAKI BAKING CO., LTD.
- YONEKYU CORP. INC.
- YORONOTAKI CO., LTD.
- YOSHINOYA CO., LTD.
- YOTSUBA MILK PRODUCTS CO., LTD.
- YUKIGUNI MAITAKE CO., LTD.
- ZENSHO HOLDINGS CO., LTD.

etc.

## ■ High-quality visitors gather at FOODtech Week

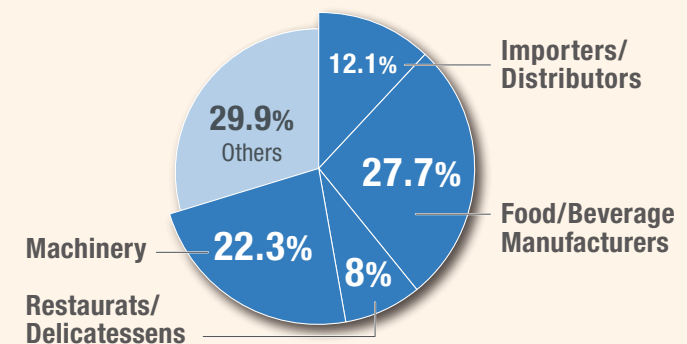
### Titles of the Visitors in 2022

**71% of visitors were decision makers!**



Source: The Questionnaire of FOODtech Week Tokyo 2022

### Business Categories of the Visitors in 2022



Source: The Questionnaire of FOODtech Week Tokyo 2022

# Listen to What Exhibitor Have to Say!

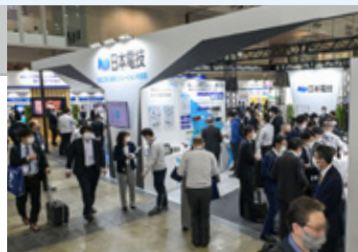
## Voices of achievement from exhibitors (excerpts)

### The Tokyo Show -Exhibitors

#### Nihon Dengi Co., Ltd.

Exhibits:  
Smart Factory Systems

During FOODtech Week, we exchanged more than 2,000 business cards and secured concrete projects with 60 companies. We can get many leads at FOODtech Japan which we follow up for a full year.



#### KAMINASHI, Inc.

Exhibited Product:  
On-site DX Platform

We acquired over 1,000 business cards, mainly from food manufacturers, and got very hot leads at the show. We got many orders right after the show, and we were very satisfied. We have decided to participate again in both Osaka and Tokyo next time.



#### NAKANISHI MFG. Co., Ltd.

Exhibited Product: Automated  
Cooking Equipment

We exchanged over 1,600 business cards. We received numerous specific inquiries leading to quotation requests, which left us highly satisfied. In addition to food manufacturers, we were able to explore new clients at the show. We also decided to participate again next time!



### The Osaka Show -Exhibitors

#### SHOWA Co., Ltd.

Exhibited Product:  
Automatic Cleaning Machine

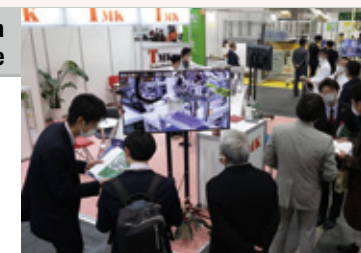
We were able to negotiate with numerous food and beverage manufacturers in the West region of Japan. We were highly satisfied as we encountered many new customers with whom we had no prior transactions. We secured inquiries for 10 potential deals and anticipate orders worth 50 million JPY.



#### TMK Co., Ltd.

Exhibited Product: Automatic Pizza  
Sauce Spreading Machine

We received 5 inquiries and anticipate orders worth 40 million JPY. We successfully showcased and introduced our products. We are pleased with the results of our exhibiting and have decided to exhibit again next time!



#### Yanmar e-stir Co., Ltd.

Exhibited Product:  
Bio Composter

We have received 50 inquiries, and it appears that we have already finalized orders from 3 companies. We are extremely satisfied with the quality of the visitors and the successful negotiations.



## It will be your turn to have a success at the show!



# Food Industry Top Leaders Speak at Conference

## < Excerpt List of Seminar Speakers >

### Latest Trend



Masayoshi Mizuno  
Director-General for  
New Business and Food Industry,  
Minister's Secretariat,  
**Ministry of Agriculture,  
Forestry and Fisheries**

### Next-generation Smart Factory



Munehiko Ono  
Director, head of Kansai Plant,  
in charge of Production Division,  
**Nissin Food Products  
Co., Ltd.**

### Evolving Smart Factory



Satoru Ida  
Executive Officer,  
Associate General Manager,  
Production & Logistics Strategy  
Div.,  
**Meiji Co., Ltd.**

### AI in Food Industry



Yusuke Ago  
Manager,  
Machinery Development Group,  
Engineering Strategy Dept.,  
**Nichirei Foods Inc.**

### Reducing Food Loss



Yasuo Morimoto  
Director,  
**Matsuzawa Co., Ltd.**

### AI in Food Industry



Kota Matsuda  
CEO,  
**EGGS 'N THINGS JAPAN  
K.K.**

### Contactless Technologies in Restaurants



Daisuke Hashimoto  
Manager,  
Technology Development Div.,  
**Kura Sushi, Inc.**

### Digital Transformation in Restaurants



Shigeru Haruki  
General Manager,  
**YOSHINOYA Co., Ltd.**

Honorifics omitted. In random order. The speaker's affiliation and job title may be omitted.

# Promotion Services for Exhibitors

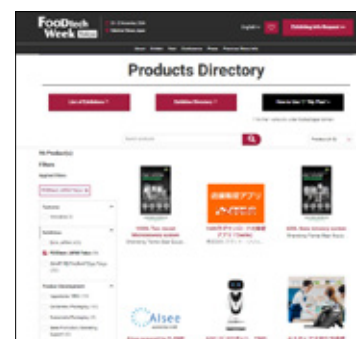
## 1 OUR "EXHIBITOR SUCCESS" TEAM WILL SUPPORT YOU

Our Exhibitor Success Team will support your preparation until the show to make your exhibiting successful.



## 2 LISTING ON EXHIBITOR DIRECTORY (WITH A CHARGE)

Visitors will check Exhibitor Directory before their visit and also they request appointments via the website.



## 3 ADVERTISING OPPORTUNITIES (WITH A CHARGE)

We offer various advertising plans to maximise the outcome through your participation. For the details, please contact Show Management.

**Organiser: RX Japan Ltd. FOODtech Week Show Management**

 11F, Yaesu Central Tower, Tokyo Midtown Yaesu,  
2-2-1 Yaesu Chuo-ku, Tokyo 104-0028, Japan

 Tel: +81-3-6739-4125

 E-mail: [foodtech-japan.jp@rxglobal.com](mailto:foodtech-japan.jp@rxglobal.com)

## 4 EXHIBITORS' PRESENTATION (WITH A CHARGE)

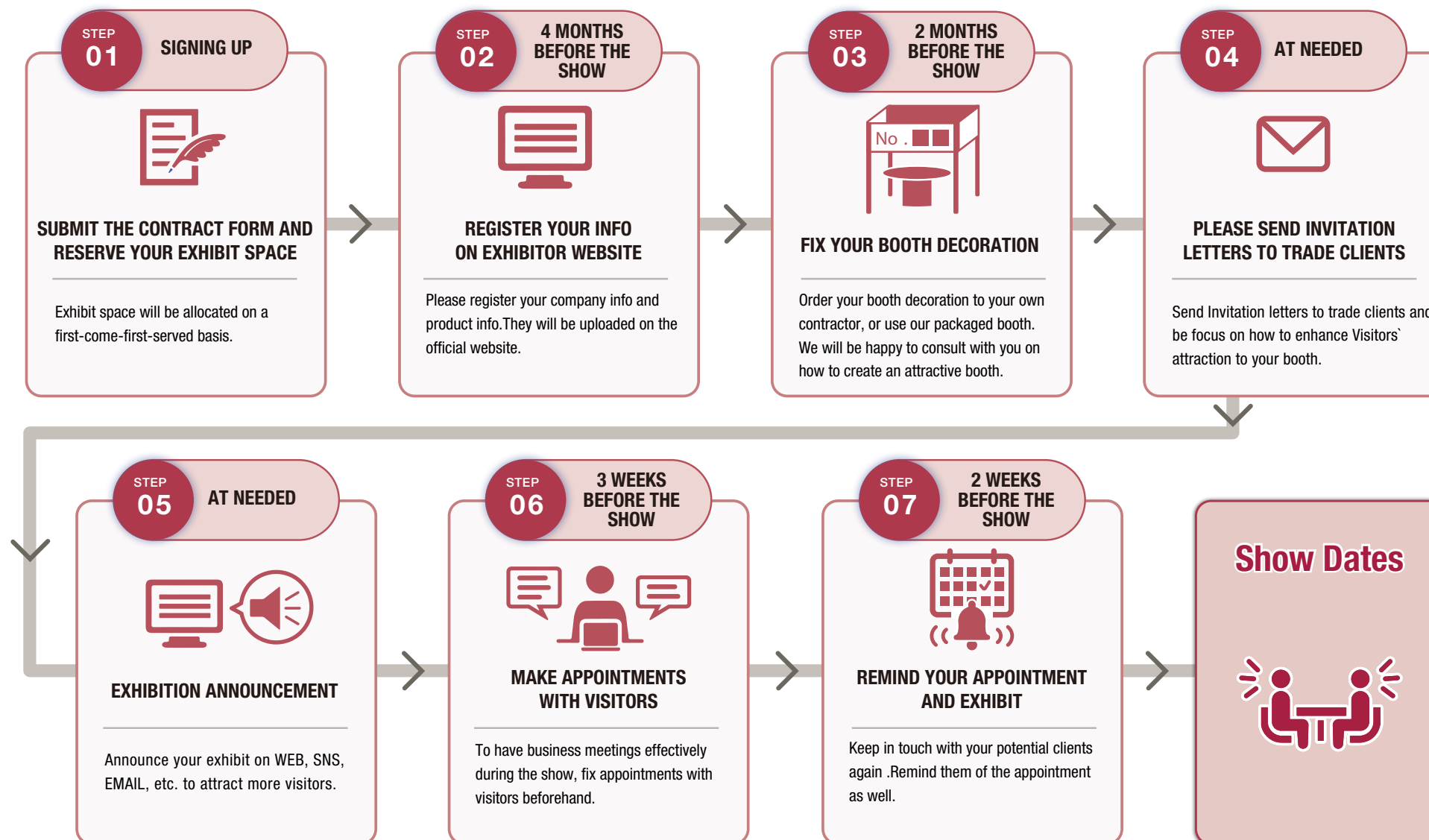
It is held in the exhibition hall and audiences can attend free of charge without prior registration.



# Schedule until the show

The TOKYO SHOW: (Nov. 2024)

The OSAKA SHOW: (Feb. 2025)



\*The schedule is subject to change.



# PR/advertisement opportunities to maximise the outcome

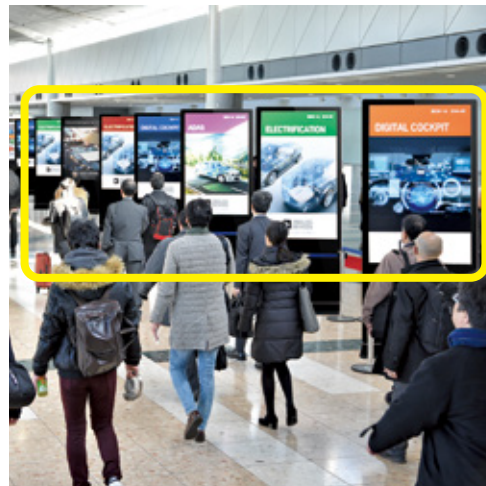
## <Examples>

### Banner Ads on Official Show Website



Official Show Website has a huge amount of traffic as the show is approaching! You can inform your potential customers of your participation widely.

### Digital Signage Ads on the Hallway



Digital signages will be placed on the hallway where there is huge traffic of visitors. Attract visitors to your booth by displaying your company name, booth location and product information.

### Hanging Banner Ad above Your Booth



This ad will enable visitors to find your booth very easily, even from a distance.

And  
more!

**For the details, contact  
Show Management.**

# Secure your space!

## Apply NOW as an Exhibitor at FOODtech Week 2024

### Contact Show Management for Exhibiting Info.

#### E-mail



[foodtech-japan.jp@rxglobal.com](mailto:foodtech-japan.jp@rxglobal.com)

#### Inquiry by Phone



+81-3-6739-4125

#### Video Call



[Click HERE to contact Show Management](#)

Organiser: RX Japan Ltd. FOODtech Week Show Management

11F, Yaesu Central Tower, Tokyo Midtown Yaesu, 2-2-1 Yaesu, Chuo-ku, Tokyo 104-0028, Japan Tel : +81-3-6739-4125

E-mail : [foodtech-japan.jp@rxglobal.com](mailto:foodtech-japan.jp@rxglobal.com) Web : [www.foodtechjapan.jp/en/](http://www.foodtechjapan.jp/en/) A division of Reed Business Registered in England, Number 678540